



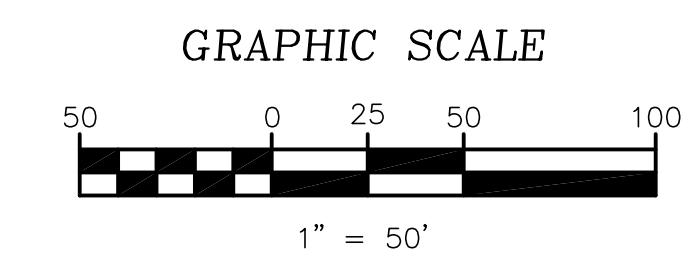


UTILITY & GOVERNING AGENCIES CONTACT LIST:

<b>GAS</b>	<b>FIRE</b>
	HEBRON FIRE PROTECTION DISTRICT
	DAVID PERKINS
	859-586-9009
<b>SANITARY SEWER</b>	<b>ELECTRIC</b>
SANITATION DISTRICT NO. 1	DUKE ENERGY
GARY AMAN	MIKE BILLOW
859-578-7467	513-287-5431
<b>WATER</b>	<b>TELEPHONE</b>
BOONE COUNTY WATER DISTRICT	
HARRY ANNESS	
859-586-7270	
<b>STORM SEWERS</b>	<b>TRANSPORTATION</b>
BOONE COUNTY PUBLIC WORKS	KENTUCKY TRANSPORTATION CABINET
GREG SKETCH	ED THOMPSON
859-334-3600	859-341-2700

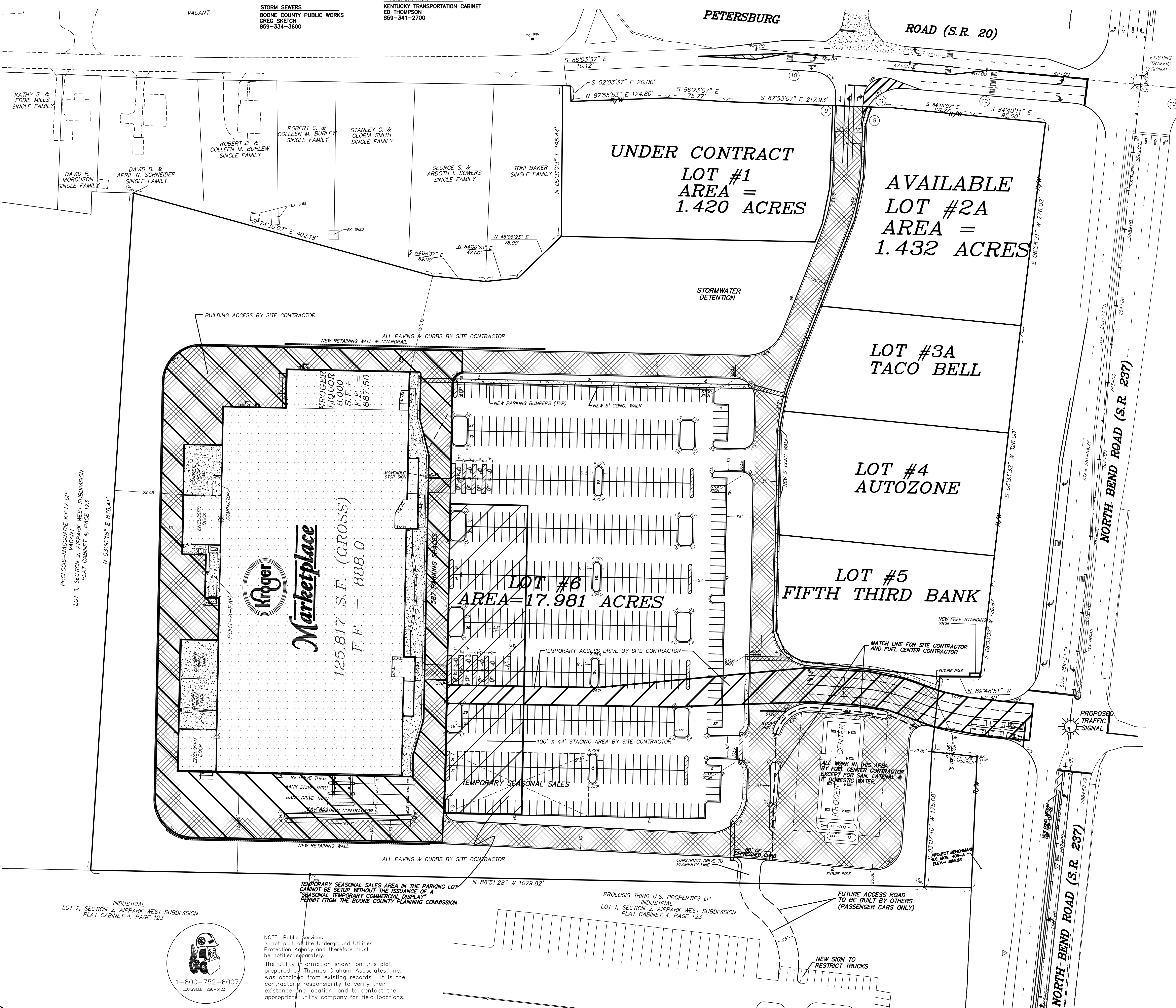
LEGEND

-  INDICATES PAINTED AREA
-  INDICATES TYPE 3 CURB & GUTTER (SEE DETAIL SHEET C4.0)
-  INDICATES HANDICAP SIGN (SEE DETAIL SHEET C4.0)
-  INDICATES NEW HEAVY DUTY PAVEMENT AREA (SEE DETAIL THIS SHEET)



**tga**  
 THOMAS GRAHAM ASSOCIATES, INC.  
 • Engineers  
 • Surveyors  
 803 Compton Road  
 Cincinnati, Ohio 45231  
 513-521-4760  
 Fax # 521-2439

Date:	MAY 16, 2012
Scale:	1" = 50'
Job No.:	7550
Revisions	
No.	Date



KATHY S. & EDDIE MILLS SINGLE FAMILY  
 ROBERT C. & COLLEEN M. BURLEW SINGLE FAMILY  
 STANLEY C. & GLORIA SMITH SINGLE FAMILY  
 ROBERT G. & COLLEEN M. BURLEW SINGLE FAMILY  
 GEORGE S. & ARDOTH J. SOWERS SINGLE FAMILY  
 TONI BAKER SINGLE FAMILY  
 DAVID R. MORGUSON SINGLE FAMILY  
 DAVID B. & APRIL G. SCHNEIDER SINGLE FAMILY

PROLOGIS-MACQUARIE KY IV GP  
 LOT 3, SECTION 2, AIRPARK WEST SUBDIVISION  
 PLAT CABINET 4, PAGE 123  
 N. 01°35'18" E. 87°28'41"

INDUSTRIAL  
 LOT 2, SECTION 2, AIRPARK WEST SUBDIVISION  
 PLAT CABINET 4, PAGE 123



NOTE: Public Services is not part of the Underground Utilities Protection Agency and therefore must be notified separately.  
 The utility information shown on this plat, prepared by Thomas Graham Associates, Inc., was obtained from existing records. It is the contractor's responsibility to verify their existence and location, and to contact the appropriate utility company for field locations.

TEMPORARY SEASONAL SALES AREA IN THE PARKING LOT CANNOT BE SETUP WITHOUT THE ISSUANCE OF A SEASONAL TEMPORARY COMMERCIAL DISPLAY PERMIT FROM THE BOONE COUNTY PLANNING COMMISSION

PROLOGIS THIRD U.S. PROPERTIES LP  
 INDUSTRIAL  
 LOT 1, SECTION 2, AIRPARK WEST SUBDIVISION  
 PLAT CABINET 4, PAGE 123

ALL WORK IN THIS AREA BY FUEL CENTER CONTRACTOR EXCEPT FOR SMALL LATERAL & DOMESTIC WATER

FUTURE ACCESS ROAD TO BE BUILT BY OTHERS (PASSENGER CARS ONLY)

NEW SIGN TO RESTRICT TRUCKS

SITE PLAN

PETERSBURG RD. & NORTH BEND RD.  
 HEBRON, KENTUCKY